



BE SAFE
BE A PROBLEM SOLVER

BE RESPECTFUL
BE A LEARNER

Term 1
Week 5
2025

1

NEWSLETTER

WILEY PARK WISDOM

In Knowledge We Grow



MESSAGE FROM THE PRINCIPAL

Welcome back to school and a big welcome to any new families.

We have had a very positive and productive start to the new school year.

All students are in their 2025 classes.

This week we held Meet The Teacher meetings for parents and carers. It was wonderful to see so many of you there.

School photos will take place on Wednesday 5 March.

Most of our students are arriving on time for school and pick up has been satisfactory.

Unfortunately, some parents and carers are late picking their child/children up.

Pick up is at 3pm our gates open at 2.50pm, please make sure you are on time.

If you are unable to be at the school by 3pm please make arrangements for another adult to pick up your child and advise our front office in advance so we can notify the teacher of the changed pick-up arrangement.

Mrs Demos
Principal



Follow us on Facebook to keep up to date with what is happening at WPPS.

Stay in touch :



Denman Avenue, WILEY PARK 2195



wileypark-p.school@det.nsw.edu.au



9750 0144 or 9750 0223



wileypark-p.school.nsw.gov.au

Reminders

Important Dates

2025

- 24 -28 February - Meet the Teacher Week
- 5 March - School Photos
- 6 March - Assembly
- 12 March - NAPLAN begins
- 14 March - ACPE begins
- 18 March - Harmony Day
- 19 March - Leigh Place visit
- 20 March - Assembly
- 21 March - ACPE continues
- 24 March - NAPLAN finishes



IMPORTANT!

NAPLAN 2025

Each year the National Assessment Program – Literacy and Numeracy (NAPLAN) is sat by students in Years 3, 5, 7 and 9. Students will participate in tests for writing, reading, conventions of language (spelling, grammar and punctuation) and numeracy.

NAPLAN 2025 will take place from Wednesday 12 March to Monday 24 March.

NAPLAN is just one part of our school's learning assessment program. The tests assess literacy and numeracy skills your child is already learning at school, so the best preparation is their everyday classroom learning. Our school will also undertake activities to help students become familiar with the types of questions and tools available in the online tests.

The public demonstration site (<https://www.nap.edu.au/online-assessment/public-demonstration-site>) is available for you to see the format of the online tests.

Further information about NAPLAN is available on the NESA website (<https://www.nsw.gov.au/education-and-training/nesa/naplan>) and the NAP website (<https://www.nap.edu.au/naplan/for-parents-carers>).



As a school we provide many resources to your child/ren in the classroom.

Please find below the levy costs for 2025 to support families in preparing for the 2025 school year. A note has gone home to all families (payment is due 28 February):

Kindergarten: \$73

Year 1: \$34

Year 2: \$46

Year 3 and Year 4: \$33

Year 5 and Year 6: \$31

Support Unit Kindergarten students: \$73

Support Unit continuing students: \$34

Support Unit new students Years 1-6: \$43



ON LINE PAYMENTS

Did you know that you can make online payments for your child for excursions and other school activities? Just visit the **School Bytes** app (details are included in this newsletter and also on our website).

NOTE : Please make sure to send back the signed permission note with the receipt number included so the school is aware that the payment has been made.



Current information regarding Opportunity Class entry in 2026, for students who will be in Year 4 in 2025, can be accessed by parents/carers online. The test structure for each test is not changing in 2025.

The Opportunity Class Placement Test will continue to have 3 sections (Reading, Mathematical reasoning and Thinking skills).

Website to access for application information:
<https://shsoc.education.nsw.gov.au/>

Important Dates:

Applications are now closed for Year 5 entry to an Opportunity Class in 2026

2-4 May 2025

Opportunity Class Placement Test
(Students will need to attend one test date only)

Monday 19 May 2025

Make up test date for approved illness/misadventure requests

You must submit only ONE application for each student.

Important – the school cannot apply on your behalf.

More information is available on <https://education.nsw.gov.au/schooling/parents-and-carers/choosing-a-school-setting/selective-high-schools/application-process/changes-to-applying-for-entry-in-2026>

Miss Sze
Assistant Principal



ELECTIONS

The executive committee is the leadership team that steers the association and sub committees towards their goals. It consists of the President, Vice President, Secretary, Treasurer and up to 6 elected Association members.

NOMINATION FORMS CAN BE PICKED UP FROM THE OFFICE OR DOWNLOADED FROM OUR WEBSITE. All nomination forms need to be handed in to the office by Friday 7 March with a gold coin

Below is a list of roles to be nominated on and their role description :

- **President -** The President has the responsibility to ensure the successful functioning of the association. This includes achieving its goals, encouraging fair participation of all members and adherence to the constitution. They must run (Chair) all meetings and may represent the association at official functions and act as the association spokesperson.
- **Vice President -** The Vice President assists the President to lead and support the committee. If the President is unable to perform any of their duties, the Vice President will be asked to stand in their place.
- **Secretary -** The Secretary is the administrative officer of the association. They are required to attend all meetings, write the meeting agenda (in consultation with the President) and take notes during the meeting to produce the minutes of the meeting. It is the secretary's responsibility to keep records of correspondence and other information.
- **Treasurer -** The Treasurer is responsible for sound financial management of the association. The treasurer keeps records of all monies in and out and must present a formal financial statement at every meeting.
- **Other Positions -** Often other committees such as fundraising committees are formed. Members of these committees are responsible for conducting the set objectives of that committee. Once the set objectives are reached that committee may no longer be required. Extra support may also be required from time to time to assist with special events.



The school uses School Bytes to accept payments for things such as an excursion and in school visits.

Download the School Bytes app from your app store.



Press on **Create an account**.

An email will be sent to the email address nominated so that you can verify your access.

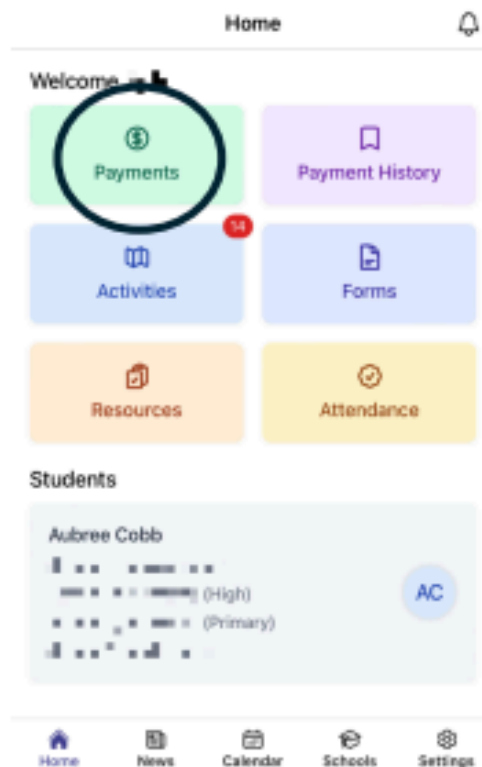
IMPORTANT: To ensure that the registration process works smoothly, and you can link your account to your child/ren, make sure that you use the same email address that you have provided to the school.

Once account is created you will need to go into the app to login. Once logged in it should ask for your child/ren's name, school, grade & date of birth.

Once your child/ren is found you can make payments through the app, by going into **Payments**. This will then take you to everything that is owing for child/ren.

Please note: Transactions made through the online payment portal will appear on your bank statement as **OSCHOOLSONLINE 0000 PARRAMATTA AU**.

Example of School Bytes App home screen.



Once an account has been set up, you are able to access the app and pay any owing money through it.

Please Note: Any excursion notes will still need to be signed and returned to school.

| NSW Department of Education

Why attendance matters



When your child misses school they miss important opportunities to:



Learn



Make friends



Build skills through fun

Days missed = years lost

A day here and there doesn't seem like much, but...

When your child misses just...

they miss weeks per year

and years over their school life

1 day per fortnight
 = **4** weeks  = Over **1** year missed

1 day per week
 = **8** weeks  = Over **2.5** years missed

We have vibrant and exciting music programs planned across the school this year. Working with Ms Young again on Mondays and Tuesdays, is Ms Hiromi, an accomplished musician assisting to deliver a quality music education to the students of Wiley Park Public School. There will be several musical ensembles running this year including:

- Beginner Recorder Group
- Intermediate Recorder Group
- School Rock Band
- Choir
- Ukelele Group (new)

These groups will work on a more complex repertoire. If your child would like to further explore musical notation and start to learn to sight read music, the recorder groups are a good place to start. Band is a space to trial new instruments and develop higher order listening and playing skills and fosters working with others.

Kindergarten, Year 1 & 2 will be participating in the 'Jam on Toast' Music Program this semester. 'Jam on Toast' is an exciting music program put together by James Madsen a music educator, composer, conductor and performer. To conclude the program James Madsen (known to the students as Jamie) will be coming to Wiley Park Public School to Perform on Friday 13 June in Week 7.

Year 3, 4 & 5 will engage in a keyboard program this term. They will explore notes on the keyboard and relate them to notes on the staff as well as play some familiar simple tunes, increasing in complexity.

Hold onto your seats because Year 6 will showcase their musical talent from their time at WPPS by performing 'El Matador' as a samba bateria on drums and percussion at the Harmony Day Assembly in Week 8, on Tuesday 18 March. This will be a performance not to miss.

Ms Young
Specialist Music Teacher



SCHOOL PHOTOS

School Photo Day is coming up on **Wednesday 5 March 2025**.

Please ensure that payments are returned to classroom teachers by **Tuesday 4 March 2025**.

Students **MUST** be dressed in **FULL SCHOOL UNIFORM** on the day.

All students must also wear plain black leather or vinyl enclosed shoes.

Thanks,
Mr Thomson



Scripture

Commences Wednesday 12 March 2025

Dear Parents,

Parents/caregivers in public schools have the opportunity to have their children receive instruction in their preferred religion, where authorised teachers of that religion are available.

Due to a shortage of Islamic Scripture teachers, Islamic religious education will only be provided to students in Year 5 & 6 in Term 1. Christian and Catholic Scripture will be provided to students in Years 3 to 6 during this time. Scripture for other grades will follow later in the year.

Thanks,
Mr Thomson
(Scripture Coordinator)

SCHOOL COUNSELLOR

Hello, my name is Helen Arfanis, and I am the School Counsellor at the school. My goal is to help children achieve their full potential by collaborating with them to support the best possible outcomes.

What is a School Counsellor?

A school counsellor helps students with their academic, social, and emotional development. For example, if your child has personal challenges with making friends the school counsellor can guide and support them to handle these challenges better. The school counsellor also works with families of children with specific needs to find the right support.

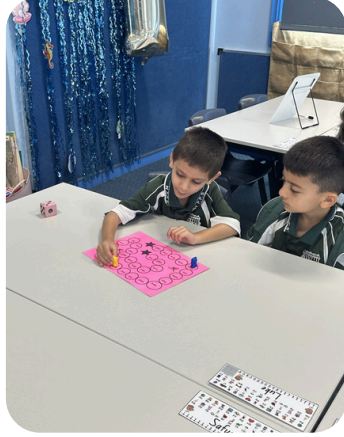
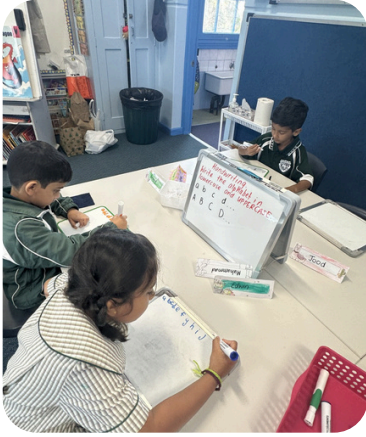
What Does a School Counsellor Do?

- Discuss with students about their concerns.
- Help them understand their challenges and work together to set goals and plan actions.
- Refer students to other mental health services if needed.
- Work with the Learning and Support Team at the school to identify and organise assistance for students with specific needs.

If you have any concerns about your child and would like them to meet with the school counsellor, please call the school and ask to speak with me.



It has been a great start of wonderful learning in 1S.
 Students have been learning through a variety of literacy and numeracy activities.
 1S have been enjoying story time and reading lots of new books.

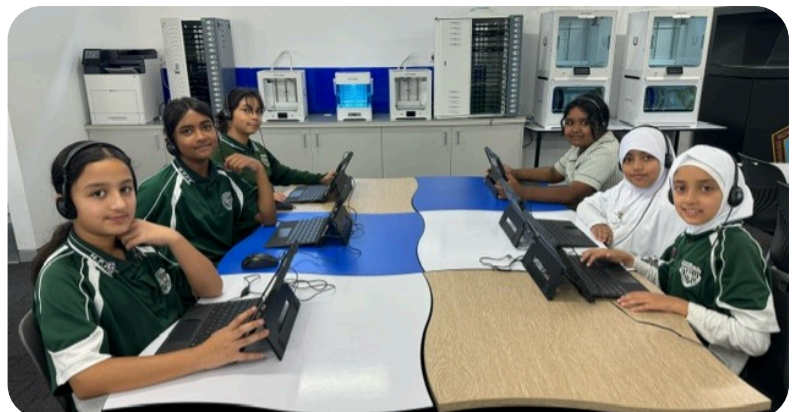
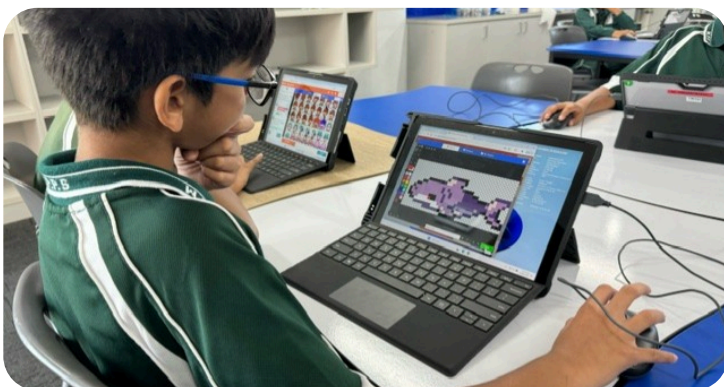


It's always fun at lunchtime when Mrs Jocelyne brings out her trolley of activities.



Have Fun

A few year 5 students were chosen to participate in the Kingsgrove North High School STEAM program. These students were chosen for their excellent behaviour choices in school and displaying school morals and values. Students worked with one of Kingsgrove North's Science teacher, Mr Celenk and participated in engaging lessons using a variety of technology to enhance their skills. Programs such as Microsoft Arcade for coding games, Tinkercad for designing and creating 3D objects, Ozobots for more coding and using drones. These year 5 silver students had a wonderful and memorable time. Thank you to the Principal and Mr Celenk of Kingsgrove North High School for the amazing opportunity. Mr Dilgee/Mr Forman



Welcome to 2025 and our first Community Centre Newsletter for the new year. It is a pleasure to welcome families back to the Centre and to meet those new to our community who are joining us for the first time.

The Community Centre provides a range of programs for Wiley Park Public School families ONLY with young children aged 0 – 8 years.

The centre works in partnership with other services in delivering parenting programs, adult education courses and support services for children and their families.

Our programs will be starting on the following dates: -

Early Learning Playgroup

Every Monday

Starts: 3 March - 7 April

Time: 1:20pm - 2:45pm

Every Thursday

Starts: 6 March - 10 April

Time: 9:15am - 11:00am

Mother Goose Program

Every Tuesday

Starts: 4 March - 8 April

Time: 9:30am - 10:30am

English Class Information Session (in partnership with TAFE NSW)

Wednesday 2 April - 9am - 10:30 am. All welcome!



WILEY PARK PUBLIC SCHOOL

COMMUNITY ROOM

ACTIVITIES & PROGRAMS

TERM 1 2025

For more information and to register please contact Lia
lia.gioulis@det.nsw.edu.au
9750 0144

MONDAY	TUESDAY	WEDNESDAY	THURSDAY	FRIDAY
<p>Early Learning Playgroup Every Monday Starting 3 Mar - 7 Apr Time: 1:20pm - 2:45pm</p> <p>Playgroup for parents and children 0-4 years in the Community Room focusing on play based activities.</p>	<p>Mother Goose Program Partnership with Creating Links Every Tuesday Starting 4 Mar - 8 April Time 9:30am - 10:30am This program has been developed to help parents learn new skills and to create new positive experiences with their child/ren.</p> <p>GO4FUN in partnership with NSW Local Health. Starting 11 Feb - 8 Apr Time: 3:15pm-5:15pm After school program for children 7-13yrs to help encourage healthy eating, promoting physical activities and improving self-esteem</p>	<p>English Class Information Session in partnership with TAFE NSW for parents to enrol and learn about the Adult Migrant English Program - AMEP 1 Day ONLY When: 2 April 2025 Time: 9am -10:30am</p>	<p>Early Learning Playgroup Every Thursday Starting 6 Mar - 10 Apr Time: 9:15am - 11 am</p> <p>Playgroup for parents and children 0-4 years in the Community Room focusing on play based activities.</p>	



EARLY LEARNING PLAYGROUP

Come and join this wonderful play based experience for newborns to 4 years old to develop new skills through a variety of stimulating activities such as painting, cutting, pasting, singing, story time, dancing and more. Our playgroups are not only educational but also provide social interaction for parents and children.

Where: At Wiley Park Public School Community Room
When: Every Monday – 1:20 pm – 2:45 pm & Every Thursday – 9:15 am – 11 am
 Parents can register for one session only.

TO REGISTER AND MORE INFORMATION CONTACT - LIA

lia.gioulis@det.nsw.edu.au or 9750 0144

Please Note:
 This program is only available to families of the Wiley Park Public School Community.

FAMILY SERVICES

PARENT CHILD MOTHER GOOSE

This program has been developed to help parents build positive, effective healthy foundations with the use of a variety of communication styles via non-verbal and verbal cues between a child and a parent.

- Sense of belonging, being and becoming
- Sense of security, confidence, self-esteem, respect and consent
- Sense of love, affection, physical touch
- Sense of resilience, boundaries, turn taking, parenting capacity and contribution
- Sense of emotions and regulation

Parents and Guardians will be able to be part of a group, learning new skills, forming new bonds and creating new experiences in a safe proactive environment

DATE: Tuesday 4 March to 8 April 2025
TIME: 9:30am - 10:30am
VENUE: Wiley Park Public School - Community Room
CONTACT: For more information and to register contact Lia - lia.gioulis@det.nsw.edu.au | 9750 0144
INFORMATION: All programs and activities in the Community Room are available to families and children of the Wiley Park Public School Community to register
 Limited spaces are available
 Light Morning Tea provided



Free English Class Information Session

in Partnership with



All parents are welcome to come along to this free information session to learn more about the Adult Migrant English Program - AMEP.

Information Session:

Where:- Community Room at Wiley Park Public School
When:- Wednesday 2 April 2025
Time:- 9am- 10:30am
 Child minding will be available.

What to bring!

ID - Drivers Licence, Passport or VISA letter

Don't miss this opportunity!
 To register contact Lia:- 9750 0144
 Email:- lia.gioulis@det.nsw.edu.au

This program is available for the families of the Wiley Park Public School community only



After school GO4FUN program

This program has started and is proving to be enjoyed by children and parents. It is designed to help encourage healthy eating habits, promoting physical activities and improving self-esteem.

If you would like more information or have any questions regarding any programs that are offered in the Community Room, please contact:

Lia Gioulis on 9750-0144 or Email: lia.gioulis@det.nsw.edu.au

Look out for SaCC news on the Wiley Park Public School Facebook page.






Wiley Park Girls High School
Open Night
*All Year 5 & Year 6 students are welcome for enrolment
 in the 2026/2027 Year 7 school year*
Wednesday 5 March
 4:00 - 5:00pm
 WPGHS - School Hall



Bankstown Girls HS OPEN NIGHT

DETAILS

- ✓ Date: Feb 25, 2025
- ✓ Time: 4pm - 6pm
- ✓ Location: Bankstown Girls HS School Hall

WHAT DO YOU GET TO SEE?

- ✓ School facilities and infrastructure
- ✓ Subject-specific showcase
- ✓ Take a tour around the school
- ✓ Meet students and staff

REGISTER NOW

- 🌐 <https://tinyurl.com/BGHS2025>
- 📞 (02) 9709 6788



Canterbury Boys High School

Where are they now?

We welcomed Aymaan from Wiley Park Public School to Canterbury Boys High School last week. Aymaan has made a wonderful transition to high school life and enjoys all his new classes, especially Science. He said that the best thing about Canterbury Boys High School so far are all of the new friends he has made. Congratulations Aymaan on becoming part of the Canterbury Boys High School community.



As your child/ren start the new school year, it is essential that they are ready with the right equipment to start each day on time and with confidence. Please ensure that all equipment and uniform items are clearly labelled.

Below is a list of items that should be provided when your child/ren start/s school. Your child/ren's list will go home at the start of the new year.

Kindergarten Student Equipment Requirements - 2025

- A school hat (available from the front office or Yeronga Uniform)
- Paint shirt (sold at Kmart, Target or Best & Less)
- 2 Glue Sticks

You may also wish to provide :

- 1 roll of paper towel
- 1 Liquid Hand wash pump
- 2 Hand Sanitiser pumps
- 2 boxes of tissues



Year 1 and Year 2 Student Equipment Requirements - 2025

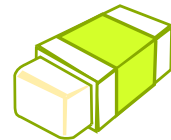
- 1 small pencil case
- 5 HB lead pencils
- 2 glue sticks (UHU or Bostik)
- 1 set of coloured pencils
- 2 white rubbers
- Sharpener (with closed container)
- 30-centimetre ruler
- 1 pair of scissors (small handle)

Additionally, your child will also need :

- A library bag (available from front office)
- A school hat (available from front office)
- Paint shirt (sold at Kmart, Target or Best & Less)

You may also wish to provide :

- 2 hand sanitiser pumps
- 1 liquid hand wash pump
- 1 box of tissues
- 1 roll of paper towel



Year 3 and Year 4 Student Equipment Requirements - 2025

- 1 pencil case
- 4 HB pencils
- 2 red pens
- 1 set of coloured pencils
- 1 pair of scissors
- 2 highlighters
- Sharpener (with closed container)
- 2 glue sticks (at least 35g in size)
- 30 centimetre ruler
- 2 erasers

Additionally, your child will also need :

- A library bag (available from front office)
- A school hat (available from front office)

You may also wish to provide :

- 2 boxes of tissues
- Hand sanitizer (at least 250mL)
- 1 roll of paper towel



Stage 3 Student Equipment Requirements - 2025

- 1 pencil case
- 2 HB pencils
- 2 white rubbers
- 1 30cm ruler
- 1 sharpener (with closed container)
- 2 glue sticks (to be kept at school)
- 2 highlighters
- coloured pencils
- textas or felt tips
- 1 pair of scissors
- 2 red pens
- 2 blue pens
- A refill liquid soap dispenser
- Geometry set (optional)

Additionally, your child will also need:

- A fabric library bag (available from the Front Office)
- A school hat (available from the Front Office)

You may also wish to provide :

- 2 boxes of tissues
- A refill liquid soap dispenser



Support Unit Student Equipment Requirements - 2025

- 1 small pencil case
- 2 HB pencils
- Pens - red and blue (Years 3-6 only)
- 1 set of colour pencils
- 1 highlighter
- Eraser
- Sharpener (with closed container)
- 2 glue sticks
- 30 centimetre ruler
- Scissors



Additionally, for your son/daughter's comfort and convenience:

- A fabric Library Bag (available from Front Office)
- A school hat (available from Front Office)

You may also wish to provide :

- 2 boxes of tissues
- A liquid soap dispenser

CANTEEN NEWS

Dear Parent and Students

During Ramadan the School Canteen hours will be from 8.30am till 12pm only.

The canteen will be closed at recess during the fasting period of Ramadan.

Regards from the Canteen staff

